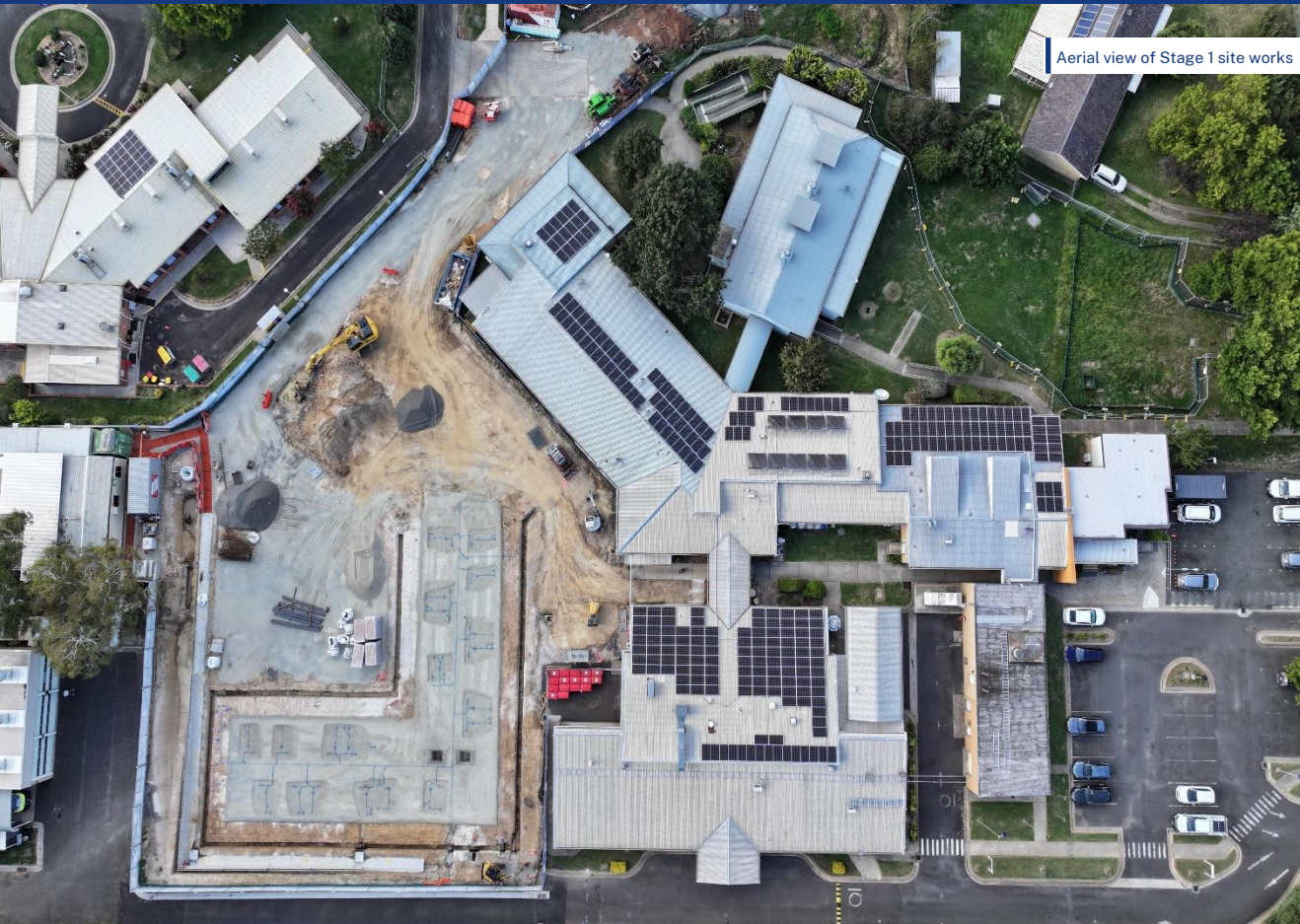


# Project Update

## Blayney MPS Redevelopment

March 2025



# Construction update

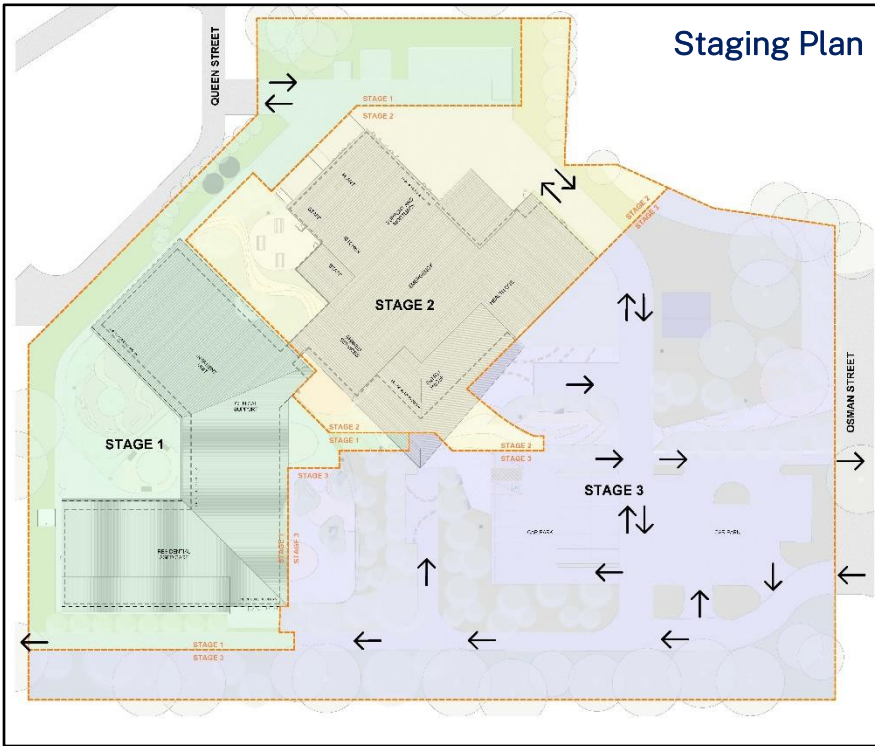
Blayney Multipurpose Service is looking a little different these days with construction on the redevelopment well underway.

The new facility will be built in stages to ensure clinical services can continue to be delivered during construction.

Stage 1A, the construction of a new access road for ambulance is complete (pictured right) and Stage 1 works, the construction of the new Residential Aged Care wing and Inpatient Unit, has started.

Currently this work includes civil works, progression of installation of inground services and footings in preparation for pouring the concrete slab.





## Keeping you informed

Staff, residents, neighbours and the community will be kept informed of progress and any impacts of construction as it progresses.

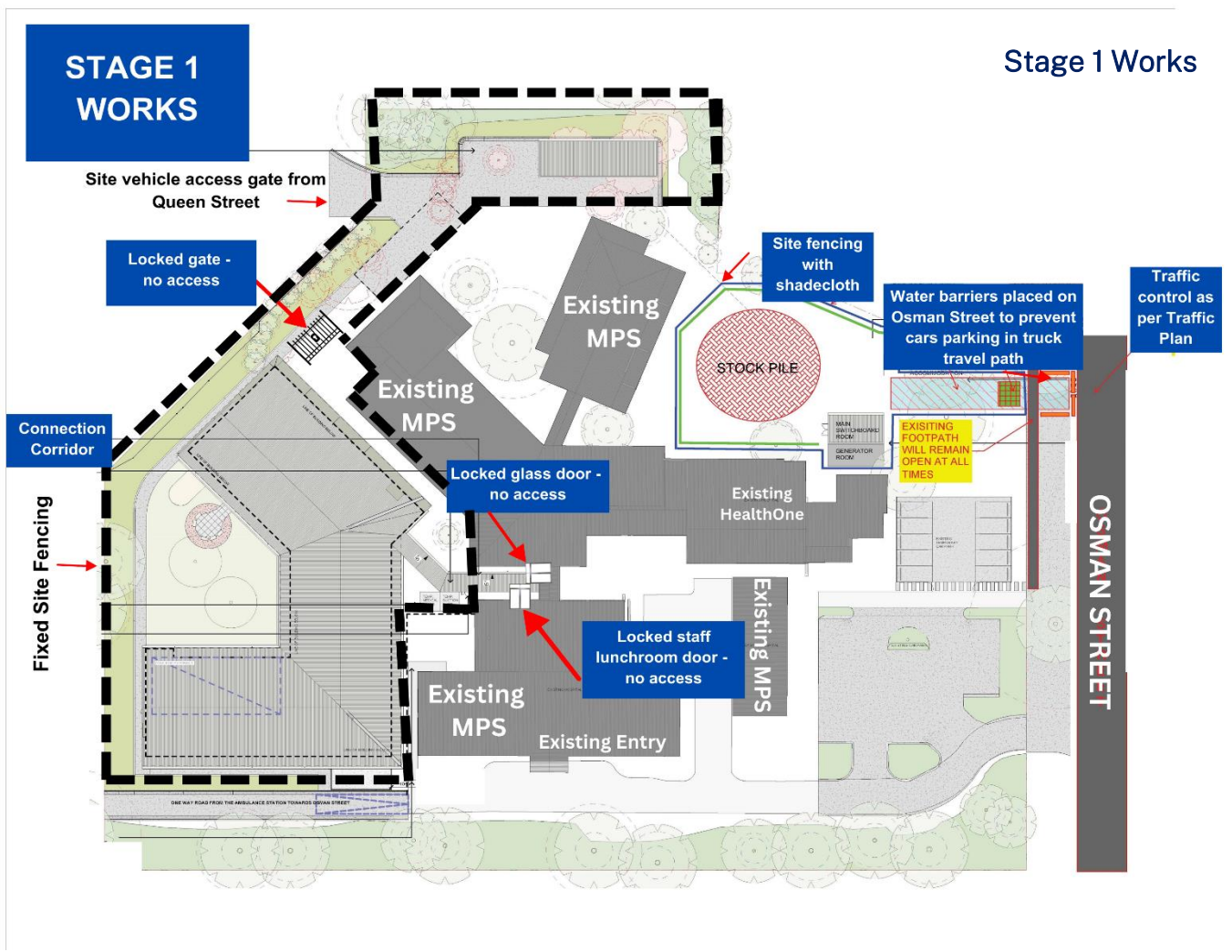
To subscribe to Project Updates, please email [HI-BlayneyMPSRedevelopment@health.nsw.gov.au](mailto:HI-BlayneyMPSRedevelopment@health.nsw.gov.au).

We thank Blayney MPS staff, residents and the community for their patience and support of this important project.

There will be regular deliveries of building materials - a Traffic Management Plan is in place to ensure the safe movement of trucks when loading material in the stock pile area. The existing footpath will remain open at all times.

Work times will be between 7.00am and 5.00pm in accordance with planning approvals.

Stage 1 works are expected to be completed in late 2025, when Stage 2 works will commence.



## Staff and residents catch up with the project team



Blayney MPS residents and staff caught up with the project team, including the builders, at the first cuppa catch-up in February.

The regular catch ups will provide an opportunity for staff and the aged care residents and their families to find out the latest updates about the construction and ask any questions.

Feedback from the residents about the redevelopment was very positive, with questions around air conditioning and soundproofing in their rooms, as well as the availability of double rooms asked and answered.

The project team are looking forward to regular cuppa catch-ups as construction progresses to ensure staff and residents are well informed about changes and impacts.

---

*“This has been so lovely - I’ve had a wonderful afternoon”  
Blayney MPS resident.*

---



## A sustainable project



Environmental Sustainability Design (ESD) is a key part of construction of the Blayney MPS Redevelopment, with the project team following Health Infrastructure’s ESD framework to achieve its sustainability initiatives.

Measures include:

- Full electrification of the new facility, including kitchen, hot water services and air-conditioning system
- 150kW solar PV system on the roof

# Temporary traffic and parking changes

Patients and visitors to Blayney MPS are advised that the road west of the main entrance of the MPS is now **one-way only** to vehicles exiting from the Ambulance station and contractor's site shed toward Osman Street, adjacent to the highway along the construction zone fencing.

Vehicles are not to enter this section of the road as per the 'One Way' sign.

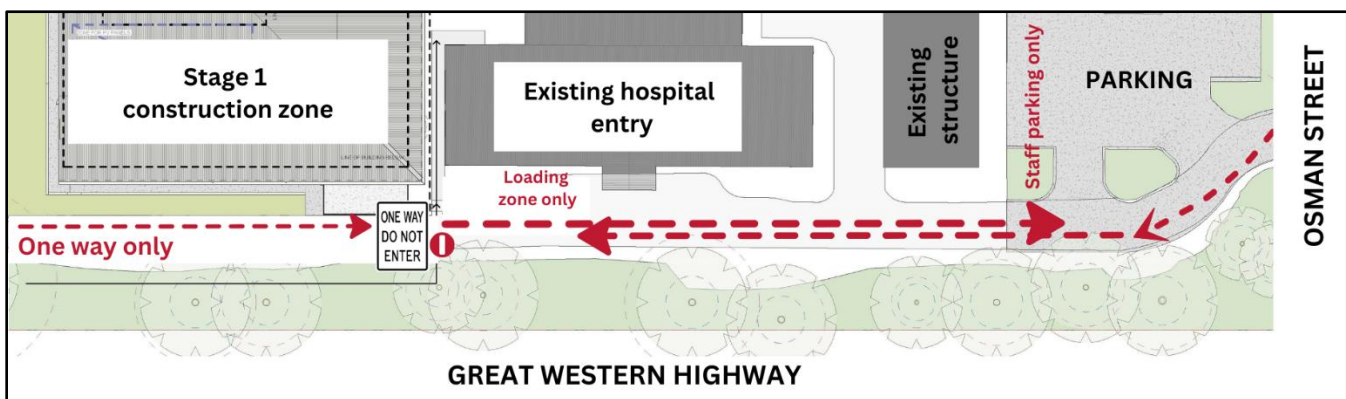
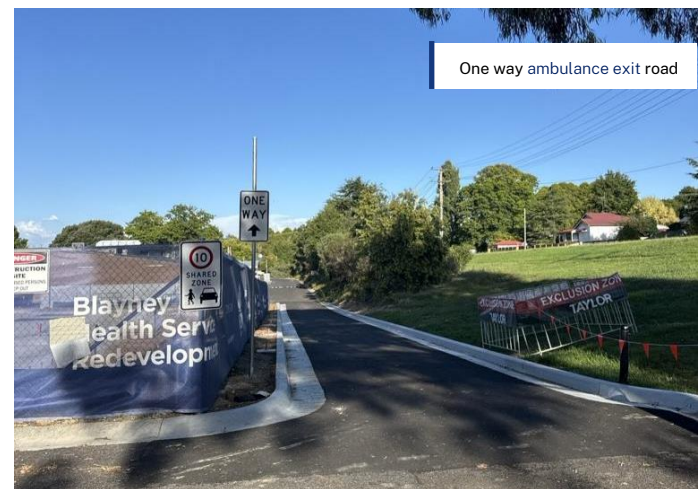
Four parking spaces in the main Osman Street carpark are now designated as 'Staff Only' parking spaces between the hours of 2pm and 8pm daily. Patients and visitors, including those visiting HealthOne should use other car spaces available in the car park or on Osman Street.

A Loading Bay Only zone has been established on the main entry road to the west of the main entrance.

These temporary changes will be in place until further notice.

See map and photos for impacted areas. For your safety, please observe and comply with signage at all times.

Map indicating changes:



# Welcome baby Frankie

Congratulations to Taylor Construction Group's Site Manager for the Blayney MPS Redevelopment project Tim Fitzgerald on the arrival of his third child just after Christmas!



Tim and his wife Taylor, big sister Elsie and big brother Tommy welcomed Frankie to the world much to the joy of the project team who are looking forward to seeing him on site soon, decked out in full PPE of course!

Tim and his family relocated to Blayney from Sydney in October last year for the duration of the project and are enjoying exploring the local area and getting to know the community.

"The decision to move to Blayney was a great one as it's been a very positive experience so far," Tim said.

"Being full-time on site is much better from a project perspective and it also means I can develop much stronger relationships with the hospital staff and local contractors.

"I'm excited about delivering this project for Health Infrastructure and the Blayney community".



## About the redevelopment

The Blayney MPS Redevelopment project is being delivered as part of the NSW Government's \$297 million Multipurpose Service Program to deliver health facilities across smaller rural and remote communities. It will deliver a new purpose-built and modern facility to improve health and aged care services for the people of Blayney.

The new facility will be built on the existing Osman Street site and will include a new residential aged care wing with single rooms and bathrooms, more inpatient unit beds, increased chair-based services and HealthOne rooms, and room for future expansion.



Health Infrastructure, Western NSW Local Health District and Blayney Multipurpose Service acknowledges the Traditional Custodians on whose lands the redevelopment project stands and pays respect to the peoples of the Wiradjuri Nation, the Traditional Owners of this land.

### For more information:

T: (02) 9978 5439

E: [HI-BlayneyMPSRedevelopment@health.nsw.gov.au](mailto:HI-BlayneyMPSRedevelopment@health.nsw.gov.au)

W: [mps.health.nsw.gov.au](http://mps.health.nsw.gov.au)