

Temporary changes to MPS car park and access

While works occur at the front car park of the Rylstone MPS, patients and visitors are advised that there will be temporary changes to car parking and access to the MPS.

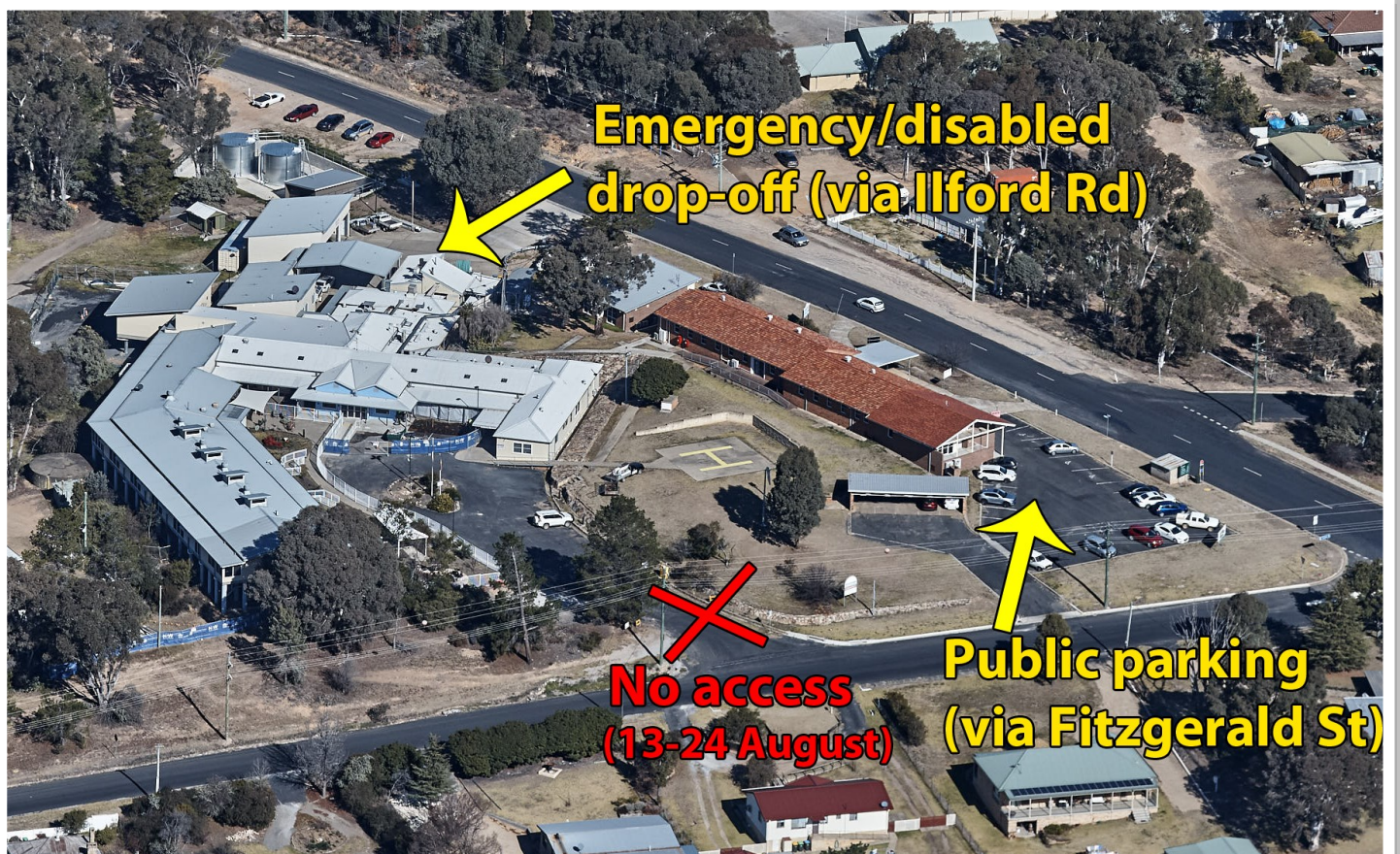
From Monday 13th August, for approximately two weeks, the following car parking arrangements and entry points will be in operation.

For **all visitors and general presentations**, please park in the HealthOne car park off Fitzgerald Street and follow the signage directing to the MPS front entry.

For **emergency presentations and disabled access only**, please access the temporary emergency/disabled entry off Ilford Road. Note this area is a drop-off zone only, parking is provided in the HealthOne car park.

Patients and visitors are asked to take care around the building site while these works are occurring.

If you have further questions about access during this time please phone the MPS on 02 6357 8111.



Temporary car parking and entry points at the Rylstone MPS while work occurs on the front car park.

Positive feedback on new facilities

While the redevelopment at the Rylstone MPS is getting closer to completion, those areas that have been finished have already been put to use, including the new staff accommodation.

Alexandria Judge recently completed her new graduate work at the Rylstone MPS and had a glowing review of the staff accommodation and the facility.

"It was very comfortable and was made to feel very welcome with the furnishings. It is the best nurses accommodation I have stayed in during my time as a student/newly registered nurse," Alexandria said.

"Rylstone MPS is filled with friendly staff and I was made to feel very welcome in the community by the staff and the people within the town. The staff are very resourceful and knowledgeable in what they do every day at the MPS. I would gladly return any day to re-join the team."

Keep up the great work Rylstone MPS!

"The staff are very resourceful and knowledgeable in what they do every day at the MPS."



New art taking shape

As part of the redevelopment project some new artwork is going up in the MPS, including an Aboriginal mural which has been developed by Peter Swain and Gavan Jones.

Peter and Gavan visited the MPS recently and shared an afternoon tea and storytelling with the staff and residents for NAIDOC week. According to reports, everyone was enthralled with Peter's storytelling and he was able to explain the meaning of the "Songlines" being installed on the walls. The picture on the left is from the start of the mural painting process.

The finished mural along with other art will be showcased at a later date in conjunction with the opening of the redeveloped MPS.