

Tenders called for construction of new Murrurundi Hospital

The Murrurundi Hospital Redevelopment project achieved two milestones in September 2019, with planning approval received and the request for tenders issued. This brings the redevelopment one step closer to the construction phase of the project.

Prior to this as part of the design finalisation, the project team visited Murrurundi on 1-2 July to present the artist impressions for the new hospital building. The overwhelming majority of community feedback has supported a new hospital. Frequently Asked Questions on the project are included over the page.

The new facility will retain the name Murrurundi Wilson Memorial Hospital, and local residential aged care services will continue to be delivered by the existing local provider.

To allow the full use of the new hospital site, the existing hospital will be demolished once services are moved over to the new hospital. Importantly, all health services will continue throughout the construction period.

The existing hospital building is aged, contains contaminated materials, has structural issues, and is no longer suitable for the delivery of modern health services. Significant costs would be incurred for ongoing maintenance as well as repurposing the building for non-health use.

Opportunities are being explored to honour the history of the existing building with the community, and incorporate existing building components into the new build. The foundation stone, plaques and the time capsule will be preserved. Some salvaged building materials such as bricks will be incorporated into the landscaping of the new courtyard.

Where to next? The construction contract is scheduled to be awarded in late 2019 with work to commence soon after.

Artist impression of the entry to the new hospital



What's included in your new hospital?

The focus of the redevelopment is on providing modern facilities to meet the needs of the local community. The new hospital will include:

- An 8-bed inpatient unit consisting of 4 single rooms and one 4-bed flexible ward
- Emergency services consisting of 1 resuscitation bay, 1 holding bay, and 1 triage/consult room
- Primary and ambulatory care services consisting of 3 consultation rooms, 1 allied health treatment room and 1 multipurpose room
- Ambulance bay suitable for 2 vehicles (for direct access to ED, note this does not replace the Ambulance Station)
- 2 self-contained staff accommodation units.



Community consultation held in July 2019

This represents an increase in **primary and ambulatory care services, emergency services, and new staff accommodation facilities.**

Consultation on the project

The redevelopment of the Murrurundi Hospital has included a wide range of stakeholder consultation including:

- Mid 2017 – Local Health Advisory Committee (LHAC) presentation
- Nov 2017 – Community consultation
- July 2018 – Staff consultation
- Aug 2018 – LHAC and Auxiliary updates
- November 2018 – Council presentation
- November 2018 – Staff consultation
- Dec 2018 – Community consultation
- December 2018-February 2019 – Community feedback on designs
- May 2019 – Council, LHAC, Auxiliary, Ambulance updates
- June/July 2019 – Staff, council and community consultation



Frequently Asked Questions on the project

Will there be palliative care services in the new hospital?

Yes, palliative care services will continue to be available in the new hospital.

Is the hospital being changed to an MPS?

No, the Murrurundi Wilson Memorial Hospital will retain its name and remain a hospital. Residential Aged Care (RAC) services for Murrurundi will continue to be provided by the local age care provider (Murravale).

Will services be increased, decreased or remain the same?

All current services will remain, and there will be an increase in primary and ambulatory care services. This includes an increase in rooms for primary and ambulatory care services including allied health from the current two rooms to five rooms. The new hospital's design also provides flexible spaces that can be used for outreach services and clinical interventions according to service demands.

Are meals changing?

No, fresh cooked meals will continue to be made on-site for patients and for Meals on Wheels.

Is the old hospital being demolished to make way for a carpark?

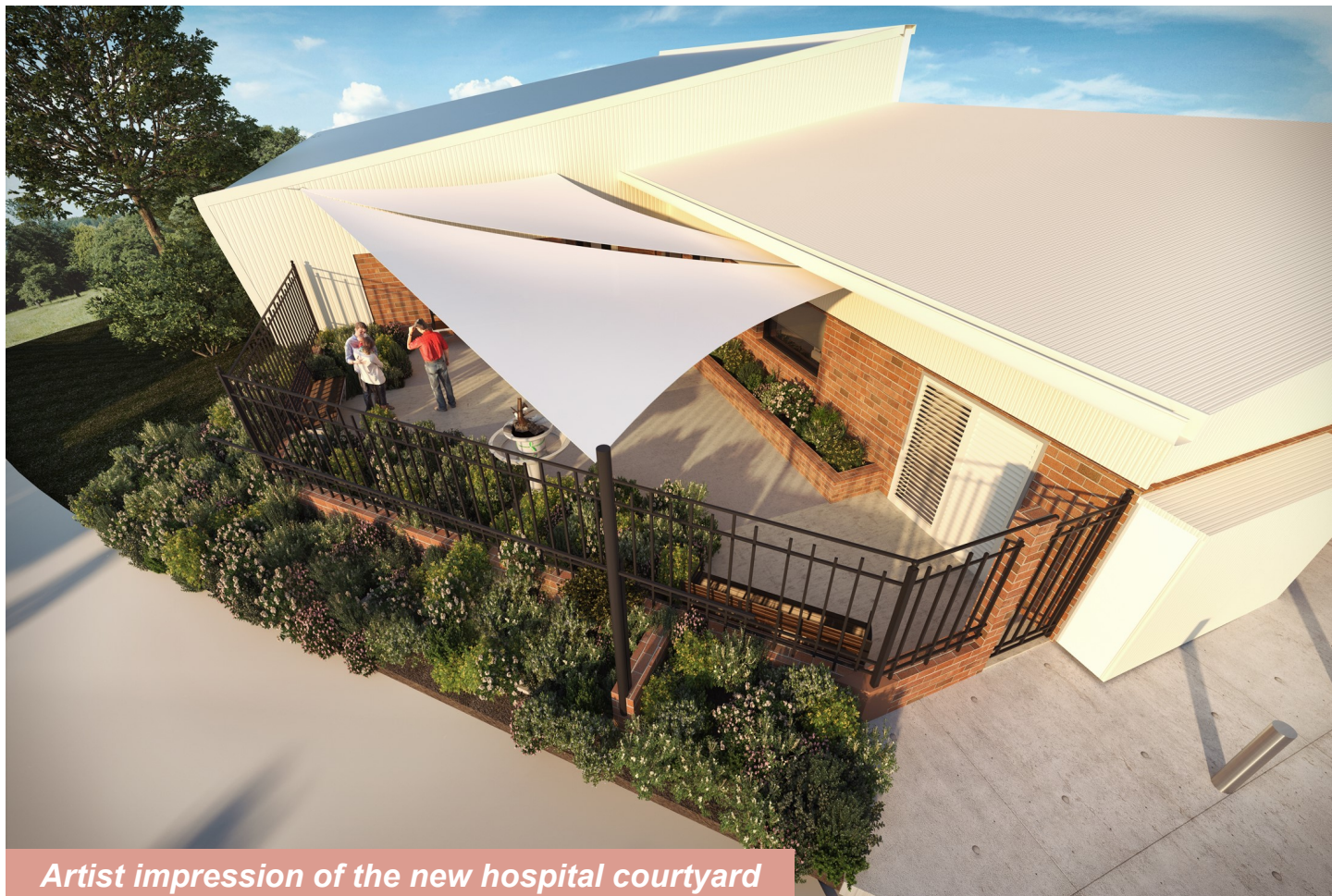
No, following construction of the new hospital and services relocation, the existing hospital will be demolished. This will allow for the full function of the new hospital, including emergency and service vehicle access and construction of the new staff accommodation building.

Comments received from the community

“As a long term resident I am 100% for a new hospital as no matter how much you change an old building it is still dysfunctional.”

“Love the design of new hospital. Very much needed for quality of care.”

“A new build would far outweigh any benefits that a renovation would. The building is too old to be a functional state of the art health facility. Keeping it would not benefit the community.”



Artist impression of the new hospital courtyard

Opportunities for community involvement

As the project progresses, there will be an opportunity for community members to be involved in a small working group to provide feedback on art, history and cultural inclusions. Applications for the working group will be called for in the coming months.

There will also be regular updates provided to the community as the redevelopment progresses.

Keep up-to-date

Project newsletters and information will be added to the Murrurundi project page on the MPS Program website at:
www.mps.health.nsw.gov.au/Projects/Murrurundi

Or see the project boards displayed in the facility.

