



The Murrurundi Hospital Redevelopment will deliver a new hospital to meet the current and future needs of the Murrurundi community, designed to meet current healthcare standards and to support enhanced models of patient care.

The final designs for the redevelopment of the Murrurundi Wilson Memorial Hospital have been developed following detailed planning and extensive consultation with staff, health users and the community.

Feedback from consultation strongly supported the concept option of a new building (>74%), to replace the existing hospital. The new build option will best meet the needs of the community into the future, and provide staff with a purpose-built facility to support enhanced models of care. The designs also take into account community feedback that the current site should be used for the location of the redevelopment.

While the redevelopment is being funded as part of the state-wide MPS Program, local aged

care services will continue to be provided separately by the local residential aged care facility.



Artist's impression of waiting reception.

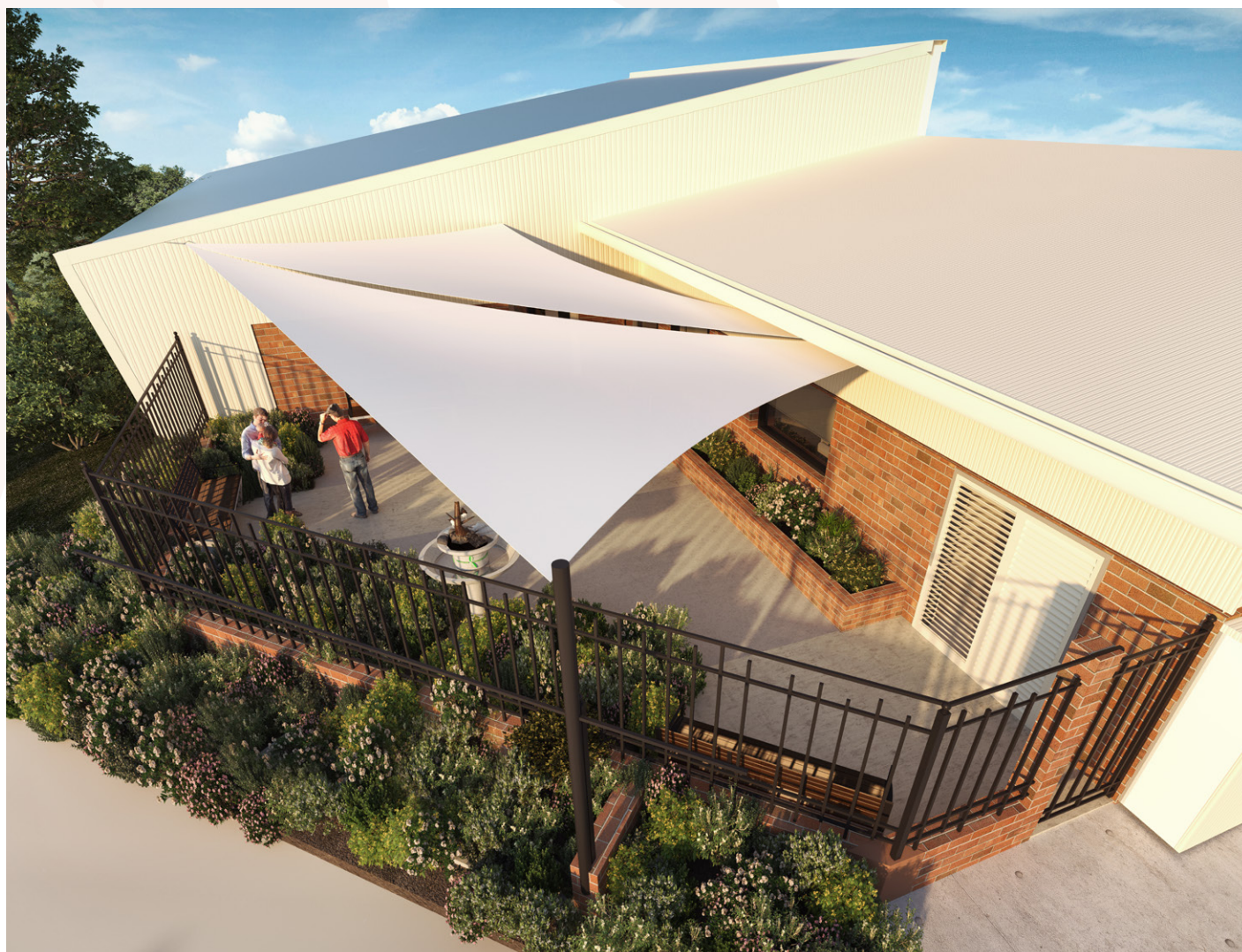


## SERVICES AND FACILITIES

The redevelopment scope is determined by the Clinical Services Plan prepared by Hunter New England Local Health District and outlined in the table below.

SERVICE	CURRENT	PROPOSED
Inpatient service (beds)	8 Beds	8 Beds (4 single rooms & 1 four bed ward as a flexible space)
Emergency services	1 Resuscitation bay	1 Resuscitation bay 1 Treatment bay 1 Triage/consult room
Primary & Ambulatory Care (includes a range of outpatient services such as physiotherapy, allied health, podiatry)	2	3 Consult rooms 1 treatment room 1 Multipurpose room
Ambulance parking bay (for direct access to Emergency – does not replace Ambulance Station)	0	2
Staff accommodation	Shared house	2 Self-contained units

### Artist's impression of courtyard.



Artist's impression of ambulance bay.



Final design for the new build.



LEGEND

- |                      |                  |             |
|----------------------|------------------|-------------|
| ENTRY/RECEPTION      | INPATIENT        | STAFF       |
| AMBULATORY           | CLINICAL SUPPORT | ENGINEERING |
| EMERGENCY DEPARTMENT | SUPPORT          | CIRCULATION |



**Views from the Murrurundi Hospital site.**



## NEXT STEPS

The overall planning process will be finalised and planning approvals will be sought before the project can proceed to tender. Subject to these required approvals it is anticipated that construction works would commence in late 2019.

## KEEP UP-TO-DATE

Project newsletters and general information is available on the Murrurundi project page of the MPS Program website at:

[www.mps.health.nsw.gov.au/Projects/Murrurundi](http://www.mps.health.nsw.gov.au/Projects/Murrurundi)

**Aerial view of current Murrurundi Hospital site.**

