

Strengthening the District's network of hospitals and health services

The NSW Government is investing in health facilities across the Southern NSW Local Health District. This includes \$18.6 million for the Cooma Hospital Redevelopment, the redevelopment of the Yass Hospital and Braidwood MPS as part of the Government's \$304 million Multipurpose Service Program and the \$150 million Goulburn Hospital and Health Service Redevelopment. The NSW Government has also committed \$200 million to deliver the new Eurobodalla Health Service and \$2.5 million towards the redevelopment of the Crookwell Hospital Redevelopment with planning well underway.

Braidwood MPS (Part of \$304 million Multipurpose Service program)

The Braidwood Multipurpose Service (MPS) Redevelopment is delivering a new purpose built Health Service to Braidwood and surrounding communities.

Construction of the new Braidwood Multipurpose Service (MPS) building, being delivered as part of the NSW Government's \$304 million MPS program, is now complete, ahead of the new facility opening its doors to the public on 25 August 2020.



One of the residents' lounges in the Residential Aged Care facility at the new Braidwood MPS.

For more information about the Braidwood MPS:

[CLICK](#) to take virtual walk through the new facility and meet some of the members of the Braidwood MPS team. This video was recorded as construction of the new Braidwood MPS was nearing completion.

[CLICK](#) to download the latest Community Update.

[CLICK](#) to view the Multipurpose Service Project website for more information about Braidwood and other MPS projects across NSW.

Braidwood MPS (Part of \$304 million Multipurpose Service program)

While commencement of operations marks a major milestone in the redevelopment project, further works are continuing onsite.

The works include demolition of the old hospital buildings, and construction of the new purpose built staff accommodation units, car parking areas, and landscaping outdoor spaces. When complete the landscaping will include walking paths, outdoor visiting areas, and passive and active recreation spaces.

Many features of the new health facility have been designed to provide therapeutic benefits for patients and visitors. Over the coming months the community will see these areas, which include an Aboriginal Garden, a resident garden, courtyards and the delivery of an arts and heritage program start to take shape.

The Redevelopment remains on track for completion in early 2021.

The new Braidwood MPS features:

- Health services co-located under one roof,
- In-patient rooms designed according to latest models of care,
- A purpose built facility delivering therapeutic benefits for patients and visitors,
- 37 residential aged care beds with activity rooms, lounge and dining facilities,
- acute care,
- An Emergency Department with dedicated ambulance entry,
- X-ray services.

Finishing works are now underway onsite, including:

- Construction of the new purpose built staff accommodation units,
- Car parking areas ,
- Landscaping outdoor spaces.



Acute care room.



The view from behind reception.

Yass Hospital Redevelopment (Part of \$304 million Multipurpose Service program)

Marking a major milestone in the redevelopment of Yass Hospital, construction of the new Emergency Department (ED) was completed in June 2020. The Department commenced operations in early July 2020.

The new ED delivers a dedicated ambulance entry point and an additional ED treatment bay.

Construction on the Yass Hospital Redevelopment started in March 2019. The new purpose-built staff accommodation was completed and operational in August 2019, and the project is on track for completion in October 2020.

Once completed the redeveloped health facility will include:

- continued access to 24-hour emergency care,
- a new ED with an additional treatment bay,
- a dedicated ambulance entry point,
- an increase in inpatient beds from 10 to 12,
- improved community and allied health facilities, office space and consultation rooms,
- ongoing access to X-ray services,
- purpose built staff accommodation.

Construction works are carefully staged to ensure all hospital services are maintained during the construction period and operations are not impacted.



Inside the new ED at Yass Hospital.



The Yass Hospital Redevelopment is being funded as part of the NSW Government's \$304 million Multipurpose Service program to provide health and aged care services for small and remote rural communities.

[CLICK](#) to view the **Multipurpose Service Project website** for more information about the Yass Hospital Redevelopment and other MPS projects across NSW.

Cooma Hospital Redevelopment (\$18.6 million)

The first stage of work, being delivered as part of the Government's \$18.6 million Cooma Hospital redevelopment project was completed in June 2020 and commenced operation in early July 2020.

The first stage of the redevelopment project is an expansion of the existing building and temporary relocation of the Emergency Department (ED) to facilitate the next stage of works; the refurbishment and expansion of the current ED.

The Redevelopment works were temporarily suspended to enable the District to retain the existing ED and provide additional inpatient beds, if required at Cooma Hospital, in response to surge planning for the winter season and COVID-19 pandemic.

Once completed the \$18.6 million Cooma Hospital Redevelopment will include:

- a new fit for purpose ambulatory care centre,
- expanded emergency department,
- a new maternity department,
- expansion of the medical imaging department.

The District and Health Infrastructure are planning to recommence the second stage of works.



Temporary ED entrance corridor and paediatric treatment space

KEEP IN TOUCH

WEB:

- **Goulburn Hospital and Health Service Redevelopment:** <http://www.goulburnredevelopment.health.nsw.gov.au/>
- **Multipurpose Service Program:** www.mps.health.nsw.gov.au
- **Southern NSW Local Health District:** www.snswlhd.nsw.gov.au
- **Health Infrastructure:** <https://www.hinfra.health.nsw.gov.au/>

SOCIAL MEDIA:

- LinkedIn: <https://www.linkedin.com/company/health-infrastructure/>
- Facebook: [@SNSWLHD](https://www.facebook.com/SNSWLHD)
- Twitter: [@NSWHealthInfra](https://twitter.com/NSWHealthInfra)

Goulburn Hospital and Health Service Redevelopment (\$150 million)

Goulburn Hospital and Health Service Redevelopment reaches highest point

The \$150 million Goulburn Hospital redevelopment is on track for completion, with the new four storey Clinical Services Building reaching its highest point of construction.

Premier Gladys Berejiklian, joined by Health Minister Brad Hazzard and Member for Goulburn Wendy Tuckerman, attended a “topping out” ceremony to mark the milestone.

The tradition of placing a tree on top of a building symbolises the completion of the main structure of a building and celebrates the important milestone in a building’s construction.

[CLICK](#) to view the Goulburn Hospital and Health Service Redevelopment website to view the latest [drone flyover video](#) and a [photo gallery](#) from the Topping Out.



Topping Out at Goulburn Hospital and Health Service Redevelopment. (29 September 2020) Left to right: Member for Goulburn Wendy Tuckerman, Premier Gladys Berejiklian and Health Minister Brad Hazzard

Goulburn Hospital and Health Service Redevelopment (\$150 million)



Project team 'Topping Out' at Goulburn Hospital and Health Service Redevelopment (29 September 2020).

Goulburn Hospital and Health Service Redevelopment (\$150 million)



Latest aerial view of the Goulburn Hospital and Health Service Redevelopment (September 2020).

[CLICK](#) to view the [photo gallery](#) on the Goulburn Hospital and Health Service Redevelopment website

Goulburn Hospital and Health Service Redevelopment (\$150 million)

NAME THE CRANE

In June 2020 the Name the Crane competition winner was announced. The crane is called Cranium and the winner is Alex, aged 6 from Wollondilly Public School.

Alex has won \$1000 of sporting equipment for Wollondilly Public School courtesy of the Redevelopment's builder Hansen Yuncken. The best coloured entry, place getters, extra effort awards and finalists have also received prizes courtesy of Hansen Yuncken.

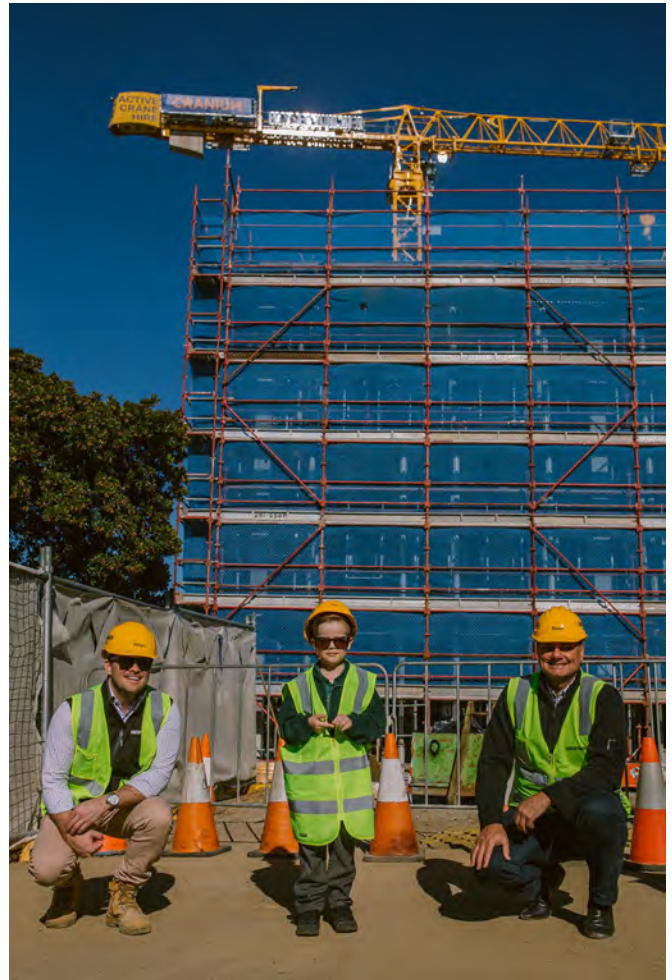
A naming ceremony took place in July 2020, involving Alex and his family, his teacher and the Assistant Principal from Wollondilly Public School.



Alex! The brains behind 'Cranium'.



Alex with Kerry Hort, Project Lead - Goulburn Hospital and Health Service Redevelopment, SNSWLHD.



Alex with the Hansen Yuncken Team.

Goulburn Hospital and Health Service Redevelopment (\$150 million)

HERITAGE SURVEY

In August 2020 the project team undertook an online Heritage survey providing staff and the community with opportunity share feedback about their memories of the Goulburn Health Service.

The Heritage survey results will help shape how 2000 catalogued items are displayed in the new four-storey Clinical Services Building, including in the new hospital's heritage exhibition and time capsule.

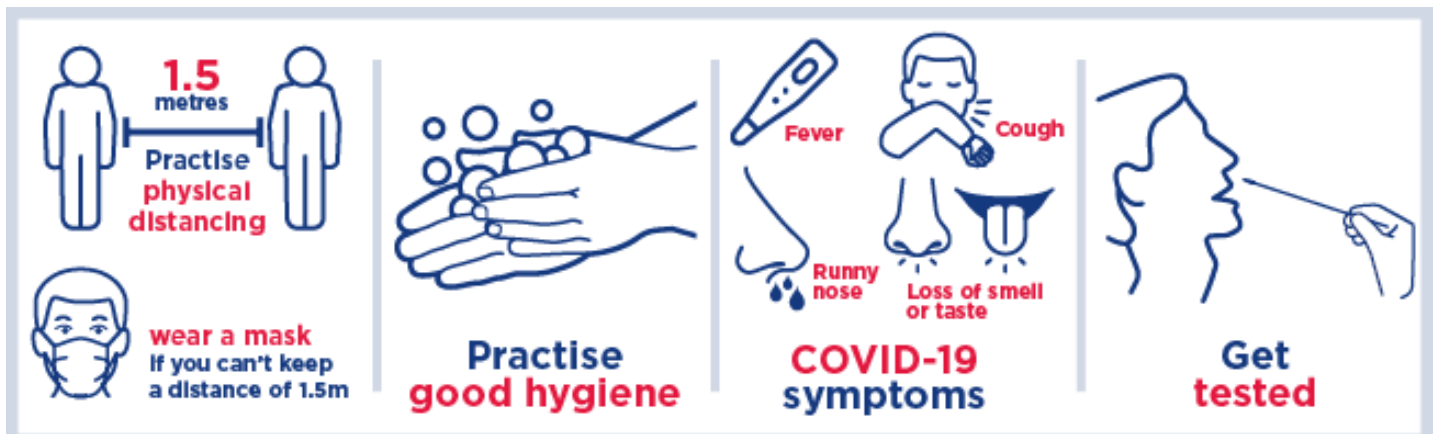


Portable anaesthetic machine, one of 2000 items catalogued items from the Goulburn Hospital & Health Service.

PHOTOGRAPHY COMPETITION

From September to the end of October 2020, local Goulburn photographers are invited to enter a photographic competition. The winning photographic images will be incorporated into the new health facility.

Information and entry forms are available on the Redevelopment website: <http://www.goulburnredevelopment.health.nsw.gov.au/news-and-publications/photographic-competition>

1.5 metres
Practise physical distancing

wear a mask
If you can't keep a distance of 1.5m

Practise good hygiene

COVID-19 symptoms
Fever, Cough, Runny nose, Loss of smell or taste

Get tested

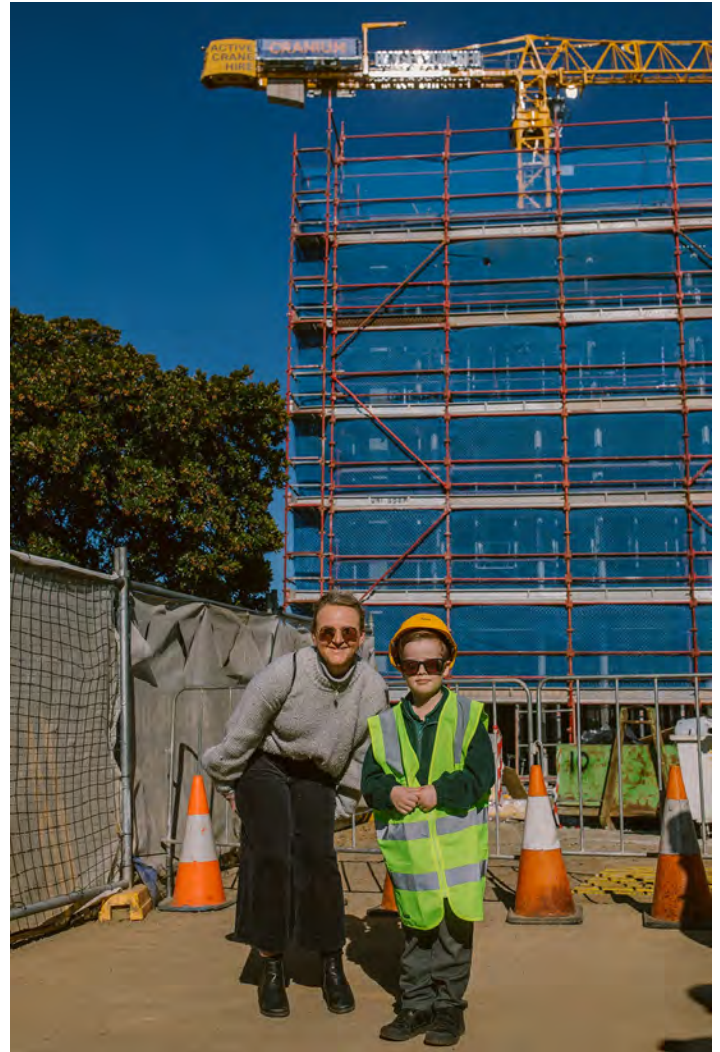
Goulburn Hospital and Health Service Redevelopment (\$150 million)

The Goulburn Hospital and Health Service Redevelopment project will deliver:

- A new four-storey Clinical Services Building which will include:
 - main entry and hospital reception,
 - ED,
 - medical imaging department,
 - intensive care unit,
 - operating theatres, day surgery and recovery areas,
 - medical, surgical, paediatric, rehabilitation and geriatric inpatient units with specific designated palliative care beds, and
 - maternity unit and birthing suite, as well as ambulatory paediatric and antenatal clinics.
- Improved on-site car parking.
- An extension to the Community Health building for Community Mental Health.

Once construction is complete in 2021, the new building will then undergo an operational commissioning and internal fit-out period before opening its doors to patients in 2022. Further on-site works will continue in 2022 to complete the redevelopment.

The new facility will provide a modern, healing environment for patients and create an environment to attract and retain high quality staff.



Alex, with his kindergarten teacher in front of Cranium.

Eurobodalla Health Service (\$200 million)

The NSW Government has committed \$200 million towards the development of the new Eurobodalla Health Service, to construct a sustainable, modern and purpose-built facility to support the needs of the Eurobodalla community.

In May 2020 the NSW Ministry of Health endorsed the Clinical Services Plan (CSP) for the new Eurobodalla Health Service.

The CSP informs the requirements for a new hospital site in Eurobodalla and confirms the role of the hospital within the Southern NSW Local Health District, the range of health care services provided and how these health services may be provided.

In June 2020 the NSW Government announced it will invest an extra \$50 million, bringing the total investment to \$200 million. Early planning work has commenced to identify a site for the new hospital.

Visit the [District's website](#) to keep up to date with the Eurobodalla Health Service.



For more information please refer to 'How to build a hospital' on the Health Infrastructure website. www.hinfra.health.nsw.gov.au.

Crookwell Hospital Redevelopment (\$2.5 million)

An upgrade to the Crookwell Hospital Wellness Centre was completed in August.

Staff and clients were excited to see the fresh new look at the Wellness Centre. The centre now has a new kitchen, new flooring for the dining area, and a larger, more accessible bath and shower space. The renovation has breathed additional life into this valuable part of the hospital.

The ED plans are being finalised to ensure compliance with building and fire standards. The construction tender process will commence soon with an anticipated construction commencement date for these works in early 2021.



The new kitchen at Crookwell Hospital Wellness Centre.

COVID-19 TESTING CENTRES AND POP-UP CLINICS

Southern NSW Local Health District is operating free COVID-19 testing clinics at eight fixed sites: Goulburn, Queanbeyan, Bega, Yass, Cooma, Jindabyne, Crookwell and Moruya Hospitals.

A pop up site has also been established in Batemans Bay.

Check opening hours: <https://www.snswhd.health.nsw.gov.au/our-services/infectious-disease/covid-19>

Register to get tested if you are feeling unwell with any mild flu-like symptoms, such as fever, cough, sore/scratchy throat and shortness of breath, as well as other reported symptoms including loss of smell, loss of taste, runny nose, muscle pain, joint pain, diarrhoea, nausea/vomiting and loss of appetite.

To register call Southern NSW helpline **1800 999 880**.

It is OK to get tested more than once, if you have symptoms at different points in time.



Bega free COVID testing clinic

SAFETY IS OUR NUMBER ONE PRIORITY

Across all of redevelopment and capital works sites safety is our number one priority!

- Pay attention to all safety signage and stay within designated walkways.
- Follow the directions of safety controllers on and around Redevelopment sites.
- Ensure all access ways are kept clear to ensure the safe movement of vehicles.
- Stay alert and look out for your friends, colleagues and community.