

CAPITAL WORKS ACROSS SOUTHERN NSW LOCAL HEALTH DISTRICT

Health Infrastructure and Southern NSW Local Health District (LHD) continue to work collaboratively with all our infrastructure project teams across the district as we respond to COVID-19.

The safety of our people and communities is our number one priority. We are closely monitoring and assessing the COVID-19 situation and will make changes to operations where required and inline the changes to NSW Government advice.

We have implemented precautionary workplace measures and issued advice to our teams in accordance with the latest Government advice and guidelines to keep our workforce safe while slowing the spread of COVID-19.

The Goulburn Hospital and Health Service Redevelopment and the Braidwood Multipurpose Service (MPS) project sites are open, with work continuing consistent with NSW Government advice.

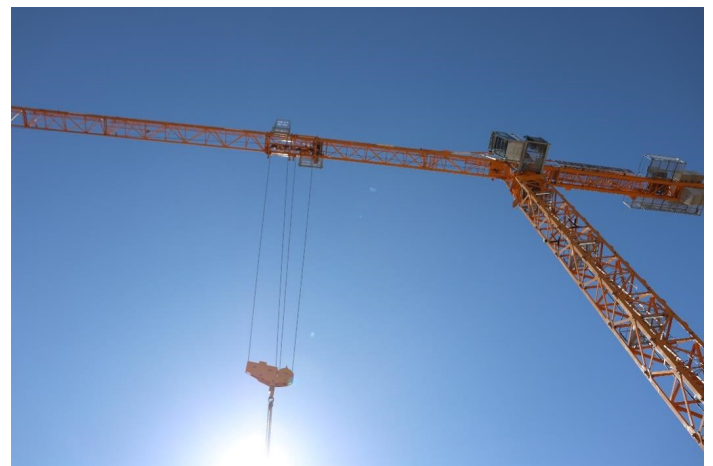
Cooma Hospital and Yass Hospital Redevelopment projects will reach key delivery milestones in May 2020. The timely completion of these elements of both projects provides the LHD additional capacity to manage potential operational impacts of COVID-19.

COVID-19 TESTING CENTRES AND POP-UP CLINICS

Southern NSW Local Health District is operating free COVID-19 testing clinics at five fixed sites: Goulburn, Queanbeyan, Bega, Cooma and Moruya Hospitals. These are open seven days 9am-5pm. Read more clinic info.

There are also pop up/temporary clinics across the region.

If you're feeling unwell with any mild flu-like symptoms like fever, sore throat, headache, fatigue, aches and pains, runny nose, cough or breathing issues – call Southern NSW helpline 1800 999 880 (option 1) to book a free COVID-19 test.



40 metre tower crane and Goulburn Hospital and Health Service Redevelopment

NSW GOVERNMENT IS INVESTING IN HEALTH FACILITIES ACROSS THE SOUTHERN NSW LHD

This includes \$18.6 million for the Cooma Hospital Redevelopment, the redevelopment of both Yass Hospital and Braidwood Multipurpose Service as part of the Government's \$304 million Multipurpose Service (MPS) Program and the \$150 million Goulburn Hospital and Health Service Redevelopment

Braidwood (Part of \$304 million Multipurpose Service (MPS) program)

BRAIDWOOD ARTS & HERITAGE PROGRAM UNDERWAY

The Braidwood MPS Arts and Heritage Project User Group (PUG) meeting was held on 10 March 2020. An arts plan for the new MPS is now being developed and this will see many of the existing pieces relocated for display in the new building.

The Braidwood Arts & Heritage plan incorporate three key components:

- Curated rotational display area in main lounge/ dining area.
- Home-like ambience: moments of distraction in corridors, such as heritage photography, book/ display shelves to include lamp light, photo frames, and vases of flowers.
- Existing artworks (many of which have been donated by the local community) to be offered to residents to display in bedroom suites, curated in groupings in other hallway areas.

A heritage timeline is also proposed for the main entrance.

Thank you to the community members and staff for their contribution to date. More information will be shared as the plan develops.

THANK YOU

The team thanks the Principal Contractor Richard Crooks Construction (RCC), subcontractors, Braidwood Health Service staff and the community for their continued cooperation.

PROJECT UPDATE

The Braidwood MPS redevelopment site remains open, and work continues in line with the latest advice from NSW Government. The project remains on track with the MPS scheduled for open in September 2020.



Here is a sneak peak at the prototype Residential Aged Care suites.



Aerial images of Braidwood MPS Redevelopment

April 2020

Cooma (\$18.6 million)

NEW EMERGENCY DEPARTMENT TO PROVIDE ADDITIONAL INPATIENT CAPACITY

As part of the Government's \$18.6 million Cooma Hospital redevelopment project, the new Emergency Department will be completed in May 2020. The completed Emergency Department will deliver Southern NSW Local Health District (LHD) greater capacity to manage the potential operational impacts of COVID-19.

The new department is scheduled to commence hospital operations in June 2020.

The Redevelopment works will then pause, enabling the LHD to retain the existing Emergency Department, and provide additional inpatient beds if required at Cooma Hospital. Southern NSW LHD and Health Infrastructure will recommence works onsite when appropriate, and will continue to provide updates to stakeholders as appropriate.

Once completed the \$18.6 million Cooma Hospital Redevelopment will include:

- A new fit for purpose ambulatory care centre
- Expanded emergency department
- A new maternity department
- Expansion of the medical imaging department.

The team thanks our project team, Cooma Hospital staff and the community for their continued cooperation.



New main entrance to Cooma Hospital.



New reception



New entrance corridor. View from reception

IMPORTANT REMINDER TO COMMUNITY MEMBERS

Cooma Emergency Department remains open and it is business as usual for community members needing to access medical care.

Goulburn Hospital and Health Service Redevelopment (\$150 million)

TOWER CRANE INSTALLATION AND THE REDEVELOPMENT PROJECT STARTS TO TAKE SHAPE

The arrival and installation of the 40 metre tower crane at the Goulburn Hospital and Health Service Redevelopment, on 10 March 2020, marked a significant milestone for the project. With the tower crane installed and operational the redevelopment is really starting to take shape.



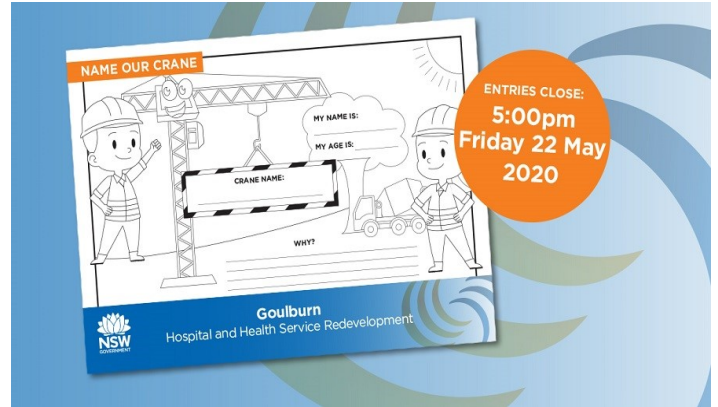
Tower crane arrives at Goulburn Hospital and Health Service

105M3 OF GOULBURN CONCRETE TICKS ANOTHER MILESTONE

The first concrete pour for the slab of new four-storey Clinical Services Building took place at the Goulburn Hospital and Redevelopment site on Tuesday 31 March 2020.

Approximately 105 cubic metres of locally sourced concrete was poured as work to construct the floor plate for the lower ground floor of the new Clinical Services building continued.

Once complete, the lower-ground floor of the new Clinical Services building will accommodate a number of critical departments, including the Emergency Department (ED) with its ED Short Stay and Ambulatory areas and Ambulance Bays, Medical Imaging; Patient Flow and Mental Health Triage & Emergency Service; Security, Mortuary and plant and communications rooms.



NAME THE CRANE COMPETITION

The Goulburn Hospital redevelopment launched a Name the Crane competition in April 2020.

As part of the competition, primary school children from the Goulburn-Mulwaree and Upper Lachlan Shire Local Government were invited to name the 40 metre tower crane that will be part of Goulburn's skyline for the next 12 months.

The winning student will have their entry displayed at the redevelopment site and their primary school will also receive a \$1,000 prize for sporting equipment or books. The competition closed on Friday 22 May 2020.



Concrete slab pour at Goulburn Hospital and Health Service Redevelopment site

Goulburn Hospital and Health Service Redevelopment

PROJECT UPDATE

The Goulburn Hospital and Health Service Redevelopment remains on track.

The main works construction phase commenced in October 2019 and work is continuing to progress in 2020



Aerial images of Goulburn Hospital and Health Service Redevelopment April 2020

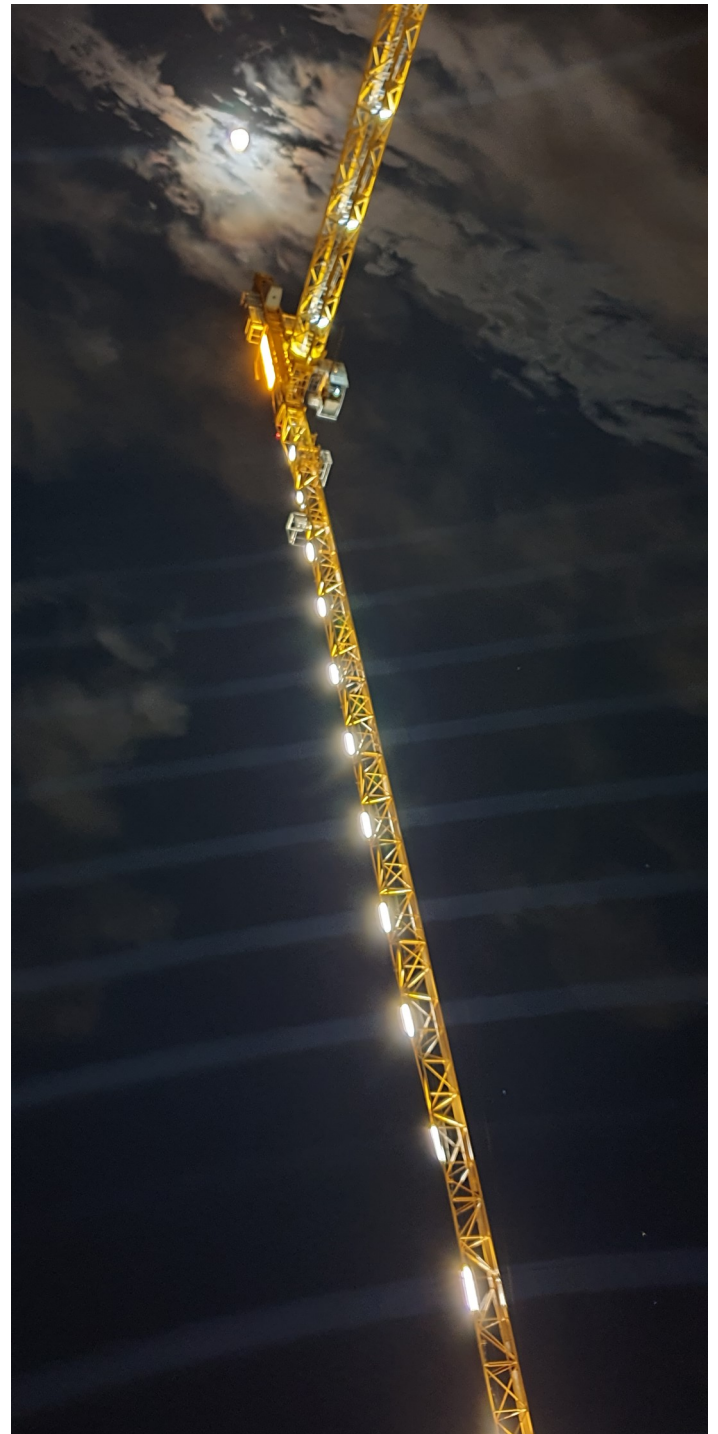
with the first concrete pour onsite completed in January and the tower crane installed as planned in March and scaffolding being erected on site.

Construction of the new four-storey Clinical Services Building is on track to be completed in 2021, and will include new:

- Main entry and hospital reception
- Emergency department
- Medical imaging department
- Intensive care unit
- Operating theatres, day surgery and recovery areas
- Medical, surgical, paediatric, rehabilitation and geriatric inpatient units with specific designated palliative care beds
- Maternity unit and birthing suite, as well as ambulatory paediatric and antenatal clinics.

Following construction completion, the new building will undergo an operational commissioning and internal fit-out period.

Once the new facility is operational, residual and refurbishment works will be undertaken across the site completing in 2022.



Goulburn Hospital and Health Service Redevelopment tower crane

Image courtesy Brian Edwardson

Yass Hospital Redevelopment (Part of \$304 million Multipurpose Service (MPS) program)

YASS ARTS & HERITAGE PROGRAM UNDERWAY

The Yass Hospital Arts and Heritage Project User Group (PUG) meeting was held in March 2020, with all participants having clear aspirations to ensure the arts integration at the hospital reflects the rich heritage in Yass.

An arts plan is now being developed and this will look to incorporate the following components:

- A heritage graphic at the main entrance
- Rotational displays in key circulation areas

Existing artwork many of which have been donated by community members to be reframed and redistributed in areas such as palliative care rooms, waiting areas and hallways. The plan is focused on ensuring arts and heritage are at the heart of the Yass Hospital.

NEW EMERGENCY DEPARTMENT NEARING COMPLETION

The new Emergency Department at Yass Hospital is nearing completion and will deliver the Southern NSW Local Health District (LHD) greater capacity to manage the potential operational impacts of COVID-19.

THANKS

The team thanks its Principal Contractor Richard Crooks Construction (RCC), subcontractors, Yass Hospital staff



New Emergency Bay Yass Hospital

IMPORTANT REMINDER TO COMMUNITY MEMBERS

Yass Emergency Department remains open and it is business as usual for community members needing to access medical care.

Crookwell

Planning is well underway on the Crookwell Hospital Redevelopment. A layout design for the new emergency department has been selected. The next step is to look at the plans for the clinical fit out and function. Thank you to Staff at Crookwell Hospital and the Crookwell Hospital Community Consultation Committee are providing feedback into the process.

Refurbishment works for the Wellness Centre are scheduled to commence in early June. This body of work will take 4 – 6 weeks.

Eurobodalla Health Service (\$150 million)

The NSW Government has committed \$150 million towards the development of the new Eurobodalla Health Service.

The NSW Ministry of Health has recently endorsed the final Clinical Services Plan (CSP) for the new Eurobodalla Health Service.

The CSP informs the requirements for a new hospital site in Eurobodalla and confirms the role of the hospital within the Southern NSW Local Health District, the range of health care services provided and how these health services may be provided.

When planning funds are allocated, early planning work will commence including site investigations and selection of a preferred site.

The Southern NSW Local Health District and Health Infrastructure will continue to collaboratively consult with the community, Health Service staff and other government agencies as part of the early planning process.

For more information please refer to 'How to build a hospital' on the Health Infrastructure website. www.hinfra.health.nsw.gov.au.



KEEP IN TOUCH

Click on the links below to keep in touch and stay up-to-date with all the latest news for the hospital and health service capital works projects across the Southern NSW Local Health District.

WEB:

- Goulburn Hospital and Health Service Redevelopment: <http://www.goulburnredevelopment.health.nsw.gov.au/>
- Multipurpose Service Program: www.mps.health.nsw.gov.au
- Southern NSW Local Health District: www.snswhd.nsw.gov.au
- Health Infrastructure: <https://www.hinfra.health.nsw.gov.au/>

SOCIAL MEDIA:

- LinkedIn: <https://www.linkedin.com/company/health-infrastructure/>
- Facebook: [@SNSWLHD](https://www.facebook.com/SNSWLHD)
- Twitter: [@NSWHealthInfra](https://twitter.com/NSWHealthInfra)