



Stage 1 now open for business

The joyful smiles of staff at Bonalbo Health Service signified a successful relocation from the old to new facility on Wednesday 18 April.

After months of excited anticipation, the doors to the new facility opened with a minimum of fuss as staff went about their daily business.

A Community Open Day held on Saturday 14 April saw over 120 people walk through the facility, with all feedback very positive.

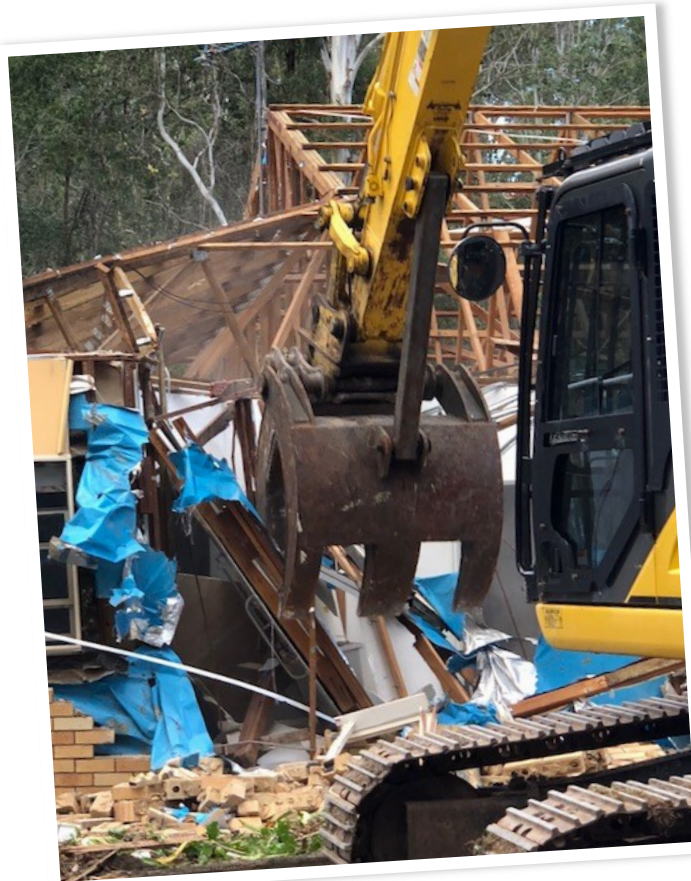
Bonalbo MPS Medical Practitioner, Dr Sunil Sunil, said he was looking forward to continuing to provide care to patients in Bonalbo.



Staff of Bonalbo MPS are all smiles following the successful relocation from the Bonalbo Hospital to the new facility on 18 April.

“I’m very impressed with the beautiful, new facility and I’m looking forward to working there,” Dr Sunil said.

The relocation paved the way for the demolition of the old hospital to enable construction of Stage 2 of the MPS, which will include the kitchen and laundry facilities required to open the Residential Aged Care facility.



Demolition of the old Bonalbo Hospital to make way for Stage 2 of the Bonalbo MPS.



New parking and pedestrian access

The opening of the new Bonalbo MPS has resulted in significant changes to the location of public parking, Disabled Parking, and the Ambulance Bay & Pick-Up/Drop-Off zone.

A temporary Ambulance Bay has been erected adjacent to the Main Entrance. The final Ambulance Bay is being constructed as part of Stage 2 and will be located at the rear of the facility, with access straight into the Emergency Department.

The temporary Ambulance Bay is also available for use

by the public for patient drop-off and pick-up during those times when it is not in use by an Ambulance.

The Disabled Parking space is located at the top of the roadway, opposite the Main Entrance. There is a pedestrian crossing marked in place.

A public car park has been constructed at the entrance to the site, along the road that leads up to Caroono Aged Care Facility. A temporary footpath is being constructed on the western side of the road leading up to the hospital's main entrance.

For more information visit the MPS website www.mps.health.nsw.gov.au or check out the project wall/staff info board for project updates
Contact our team on 0429 422 873 or email lee.mcdougall2@ncahs.health.nsw.gov.au