

GOULBURN

Project update

As demolition has now come to an end, bulk earthworks will be the next major site activity to begin.

The new Waste Shed was completed and handed over to the LHD on Friday 9 March 2019, with the team moving in that day. A lot of work has gone into improving the building and the team are enjoying their new physical space.

Installation of the main service trench for the new hospital has progressed quickly, housing power, water, gas, sewerage, stormwater, hydrant lines and a new services access road.

The redevelopment team has worked closely with the LHD to enhance the current power and water services for Community Health, CRC and the Child and Family Cottage by using this main service trench. It will also provide generator/backup power to these buildings once completed.

Project User Groups have recommenced, with each department carefully reviewing the improved designs.

The BOC oxygen tank was replaced with two new Coregas tanks to service the new hospital, with the remaining BOC oxygen tanks removed on Wednesday 27 March 2019.

You may have also noticed Hansen Yuncken is now working on site as part of the Early Contractor Involvement, bringing a wealth of knowledge and experience to the project.

The project team deserves a special mention for all the major pieces they've accomplished over the last month, it's been an extraordinary amount of work.



The official handover of the new Waste Shed to the LHD.



Work on the main service trench continues.

Parking consultation

As construction starts to ramp up, Goulburn Mulwaree Council (GMC), Health Infrastructure and the LHD project team proposed we make a few changes to on-street parking to ensure the safety of our patients, visitors, staff and nearby residents, as well as minimise disruptions.

The GMC endorsed an initial plan with the proposed changes to on-street parking around the Goulburn Hospital precinct, which was on public exhibition from 4 February 2019 to 8 March 2019.

Two community drop-in sessions and one hospital staff session were held, where representatives of the project team and Council answered questions and received feedback on the proposed parking changes.

The level of engagement from staff and the community has been impressive, with so many great ideas put forward that will go towards improving parking within the precinct.

Recommendations will now go to GMC to respond to some of the feedback received. A final proposal will be reviewed and approved by GMC in the coming months.



Some of the attendees of the first community consultation session.



Attendees workshoping ideas at the staff consultation session.

COOMA

Project update

Onsite preparations are being made ahead of the Cooma Hospital Redevelopment, with the installation of site fencing and sheds.

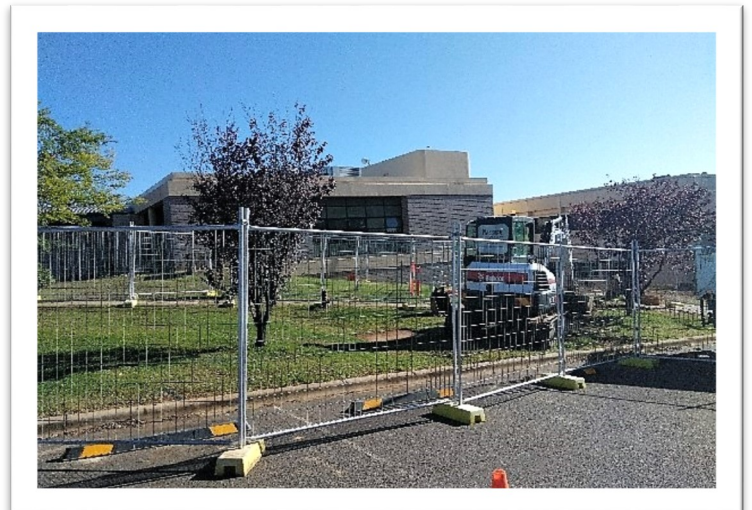
Entry to the Hydrotherapy Pool is now via the hospital's main entrance and there will be temporary changes to the car park. This will not affect the number of allocated parking spaces for the general public.

Cooma administrative office staff have also moved, with reception and admissions remaining front of house. Hoarding will soon be installed behind the reception and admissions spaces to allow us to begin refurbishment works.

Staff in these areas have been heavily involved in planning how to ensure business continues as usual.

These temporary changes will remain in place until late 2019. Onsite signage clearly marks walkways and entry points to the hospital.

With the increase in activity and disruption across the site, our priority is ensuring that patients, carers, visitors and staff are kept safe.



Onsite preparations forge ahead with site fencing installed.

BRAIDWOOD

Project update

It's an exciting time for Braidwood as construction has now commenced, with the first sod turned for the project on Thursday 28 February 2019.

This is a major milestone in the NSW Government's commitment to update Braidwood MPS as part of the \$300 million State-wide program of works to upgrade MPS facilities in rural and remote areas.

Richard Crookes Constructions has now started work on the redevelopment and site hoarding has been installed.

The project will include in-patient rooms, an increased number of residential aged care beds with activity, lounge and dining facilities, a dedicated Emergency Department and new staff accommodation in a new purpose-built facility.

The Day Centre and Community Health Centre decant has begun, with the buildings to be demolished as part of early works.



Members of the Braidwood MPS Redevelopment project team, the Community Consultative Committee and Richard Crookes Constructions help turn the first sod for the project.

YASS

Project update

It's been a busy month for the \$8 million Yass Hospital Redevelopment as construction began on Monday 25 February 2019, with the first sod turned for the project.

This is a significant milestone in the NSW Government's commitment to upgrade Yass Hospital as part of the \$300 million State-wide program of works.

Richard Crookes Construction has now commenced work on the redevelopment, with the installation of site hoarding and onsite preparations forging ahead.

The project will include relocation of the existing Emergency Department, with an additional acute treatment bay, a dedicated ambulance entry separate to the public entrance, an increase in inpatient beds from 10 to 12, improved community and allied health facilities and ongoing access to X-ray services.



Members of the Yass Hospital Redevelopment project team, the Community Consultative Committee and Richard Crookes Constructions help turn the first sod for the project.

EUROBODALLA

Community workshops — you're invited!

Eurobodalla Clinical Services Planning is in its final stages, with the clinical Model of Care Workshops completed. The project team will now host community workshop sessions on the proposed models of care to help inform the final decision on what services are needed in the Eurobodalla into the future.

A "Model of Care" broadly defines the way a health service is delivered. It outlines best practice care and services for a person, population group or patient cohort as they progress through the stages of a condition, injury or event. It aims to ensure people get the right care, in the right place, at the right time.

If you would like to attend a session, community workshops will be held:

- Tuesday 16 April 2019 – Moruya Golf Club 9:30am – 11:00am
- Tuesday 16 April 2019 – Narooma Golf Club 1:30pm – 3:00pm
- Wednesday 17 April 2019 – Batemans Bay Soldiers Club 10:00am – 11:30am

Please RSVP to Renata.Sheehan@health.nsw.gov.au by 5:00pm Friday 12 April 2019.

Light refreshments will also be provided.



Australia's Health Landscape 2017-2018

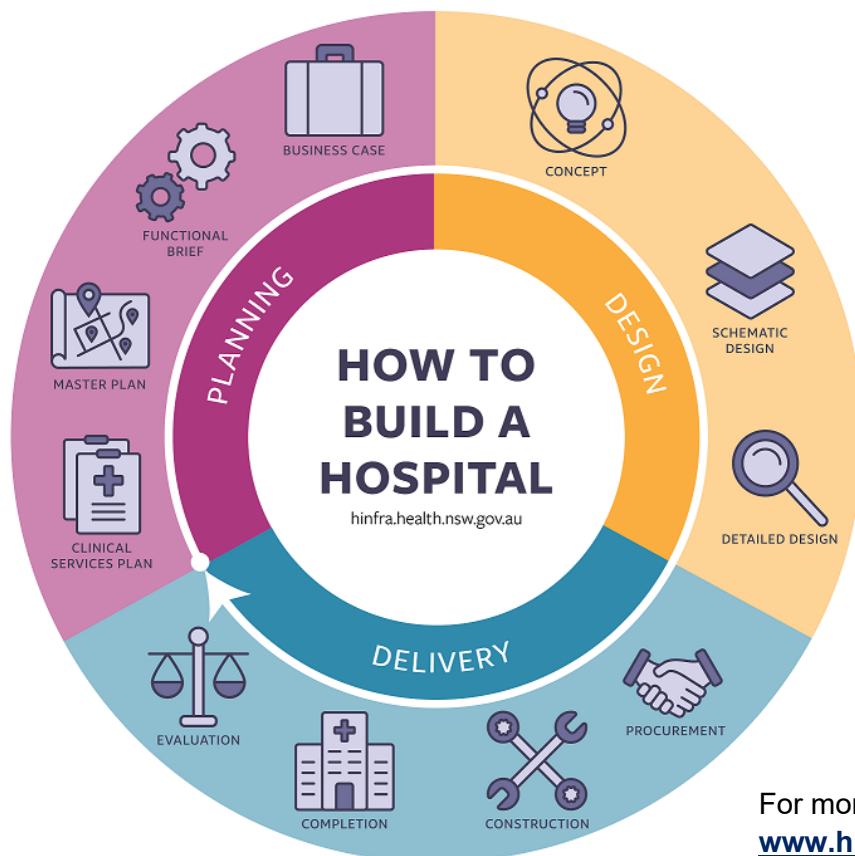
HOW TO BUILD A HOSPITAL

Redeveloping a hospital is not as straight forward as you may think – every redevelopment is tailored to a community’s unique needs. Once the Local Health District (LHD) completes the Clinical Services Plan, Health Infrastructure along with the LHD appoint a Lead Design Team to begin planning for the redevelopment. This involves creating a hospital campus master plan, which then is used to develop a concept design.

Combining information from the Clinical Services Plan, master plan and concept design, a business case is compiled which outlines the redevelopment’s scope and budget.

Only after we have conducted this extensive planning and design process can we start building. Delivery involves the award of a construction tender with the successful contractor beginning construction works which can include enabling works, early works and/or main works. As many of our redevelopments take place on existing hospital sites, it is essential that works are staged to not compromise the day to day operations of the staff and clinicians in providing patient care.

Health Infrastructure has developed a systematic approach to redeveloping hospital and health care facilities, and this is outlined in the diagram below.



For more information on how to build a hospital visit www.hinfra.health.nsw.gov.au.